

Transforming Carrier Business using Innovation enabled by a Software Defined Network

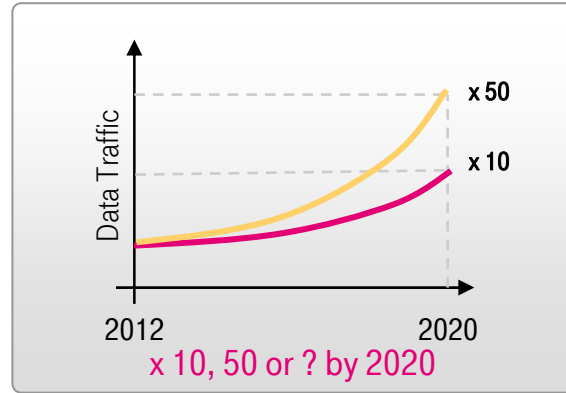
Axel Clauberg, Vice President IP Architecture & Design, Deutsche Telekom AG

Life is for sharing.



Carrier Challenges

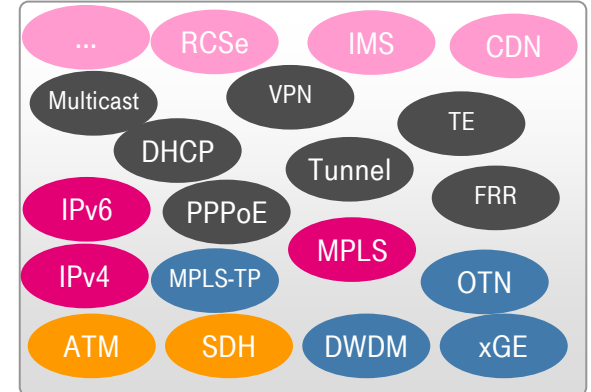
Traffic Growth



Competitive Pressure



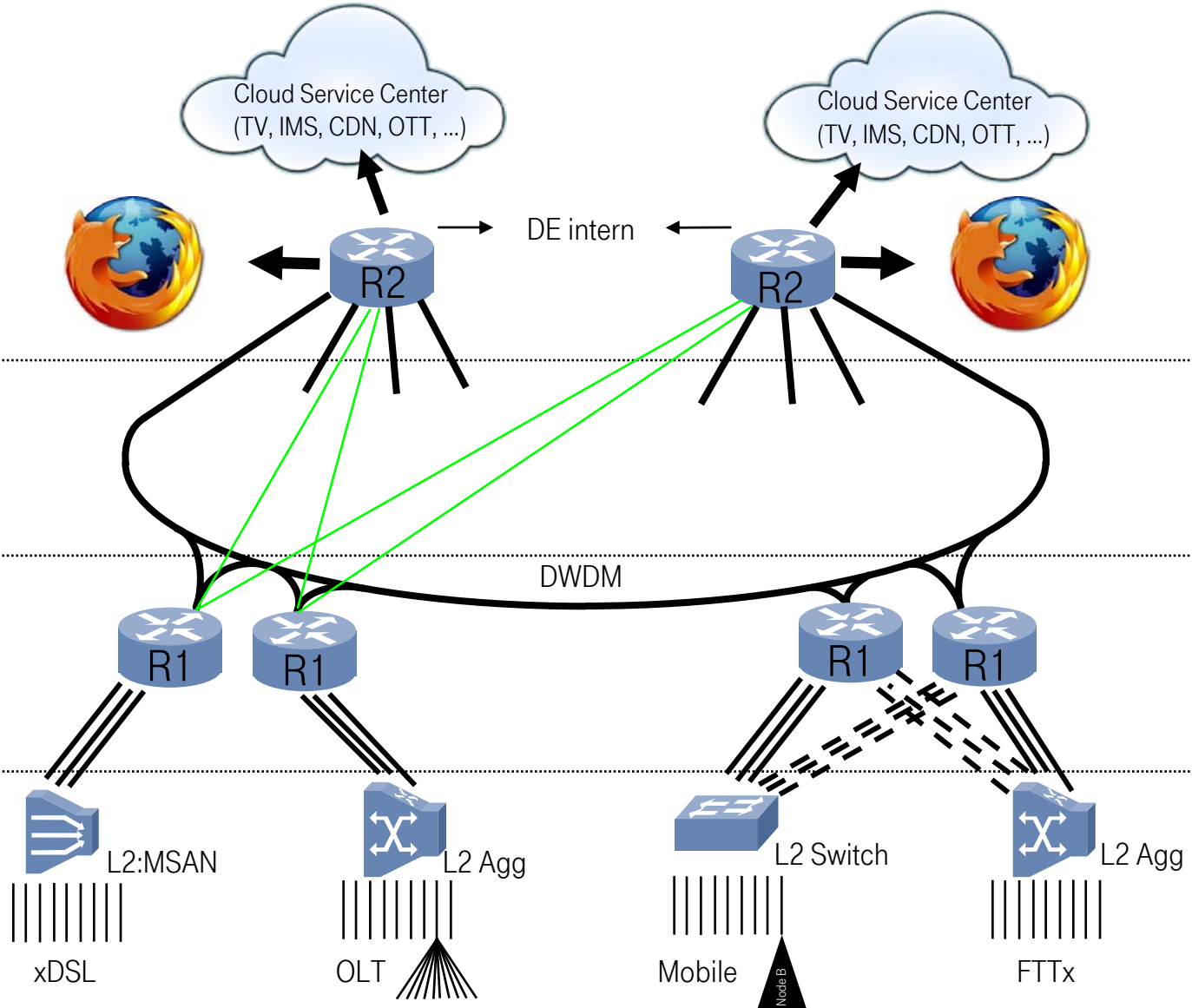
Cost & Complexity



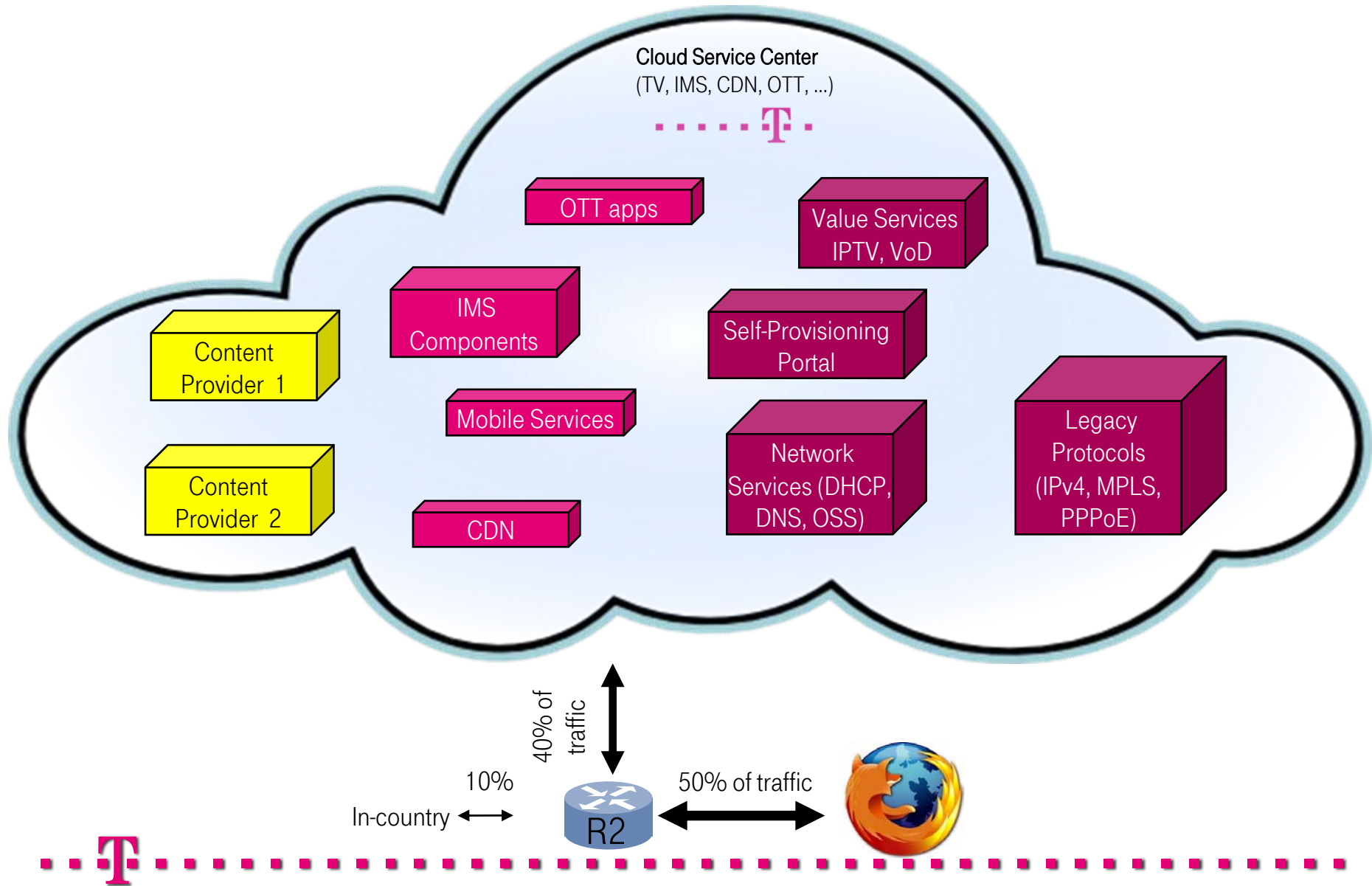
Innovation



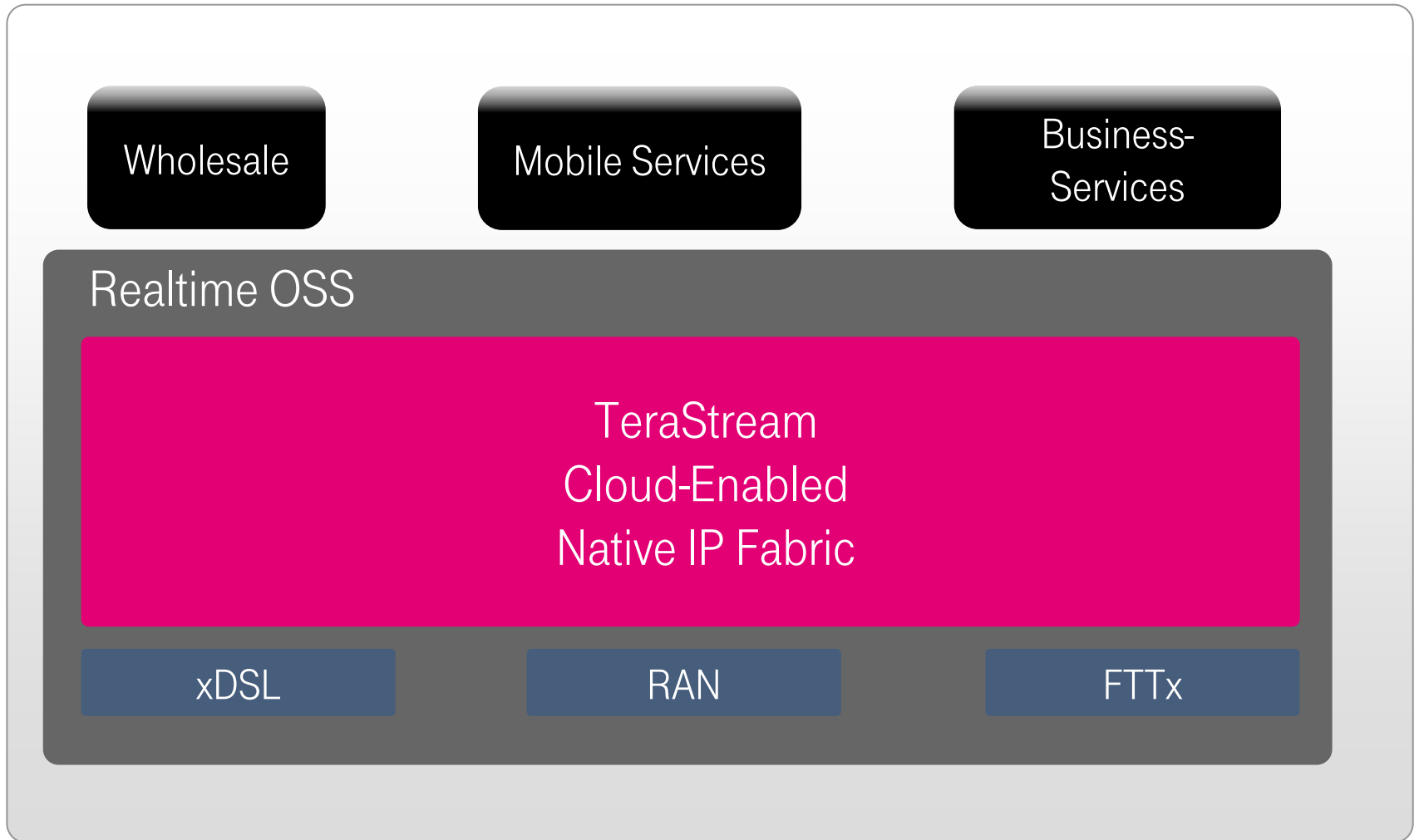
The TeraStream Architecture



What's in the Cloud Service Center ?



TeraStream – A Cloud Enabled SDN Architecture



TeraStream & OpenFlow

Use Case 1: Cloud Service Center

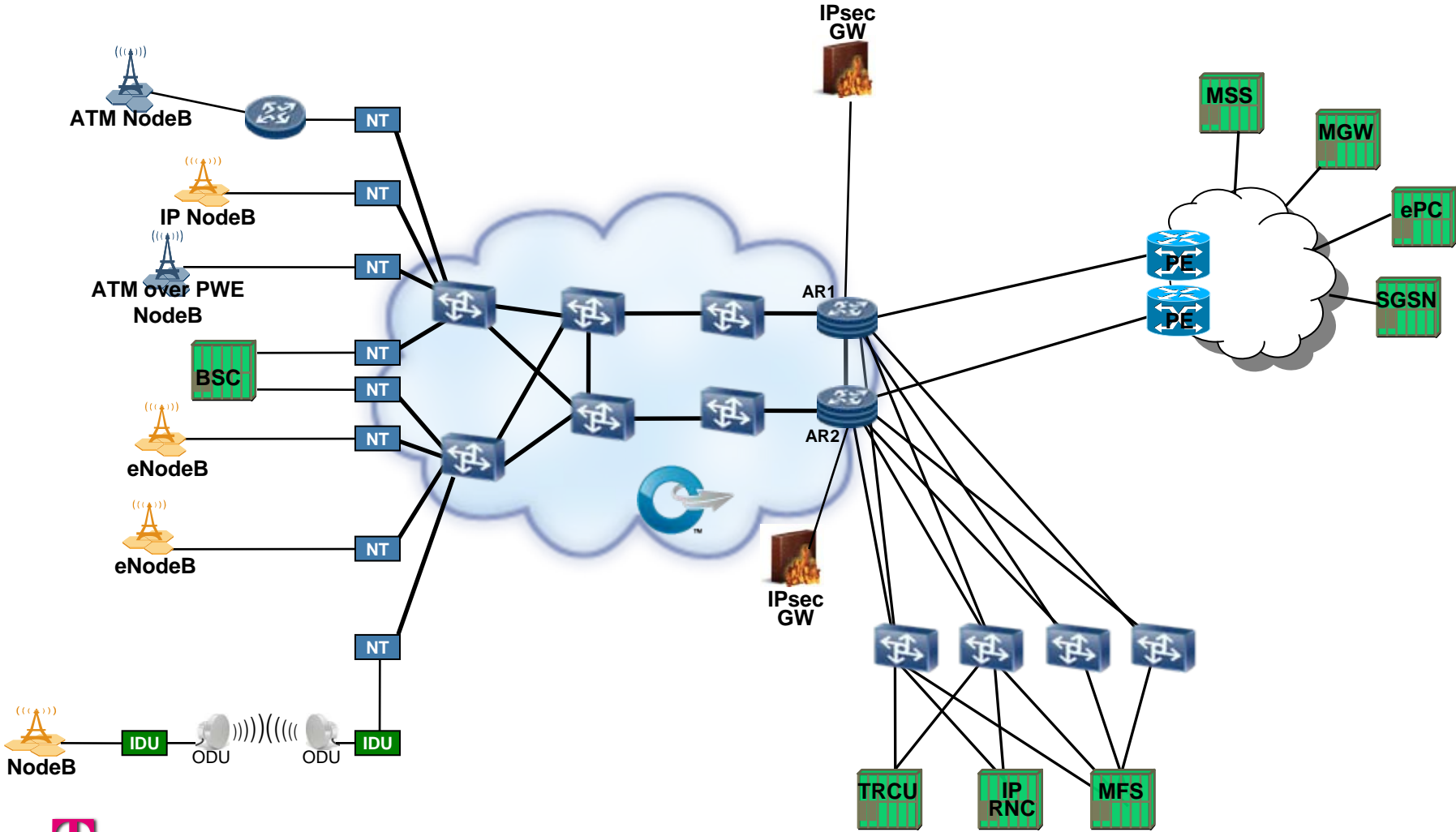
- Reduce Complexity
- Improve Efficiency
- Provisioning knows VM location, why wait for gratuitous ARP ?

Use Case 2: Access

- RAN
- Fixed



Use Case: OpenFlow in the RAN ?



TeraStream & OpenFlow

Use Case 1: Cloud Service Center

- Reduce Complexity
- Improve Efficiency
- Provisioning knows VM location, why wait for gratuitous ARP ?

Use Case 2: Access

- RAN
- Fixed

Why not in the core ?

- ++ Further reduction of complexity (e.g. tunneling)
- BGP won't disappear

Next steps are depending on the results of the ONF Hybrid Network WG



Summary

TeraStream is a Cloud-Enabled Native IP architecture

- Cost leadership
- Service leadership
- Innovation Leadership
- Fixed Mobile Integration

From Realtime OSS to a Software Defined Network

Future steps

- Openflow Integration in Cloud Service Center
- Openflow in Access
- Hybrid

